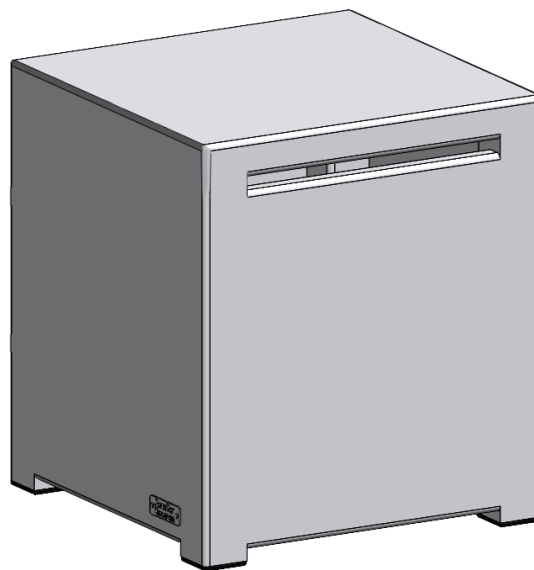
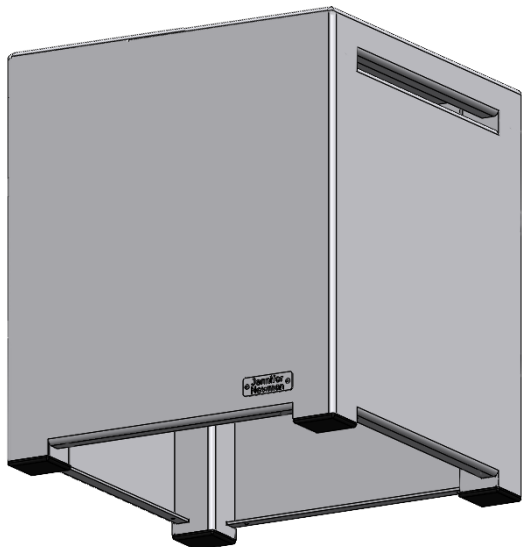


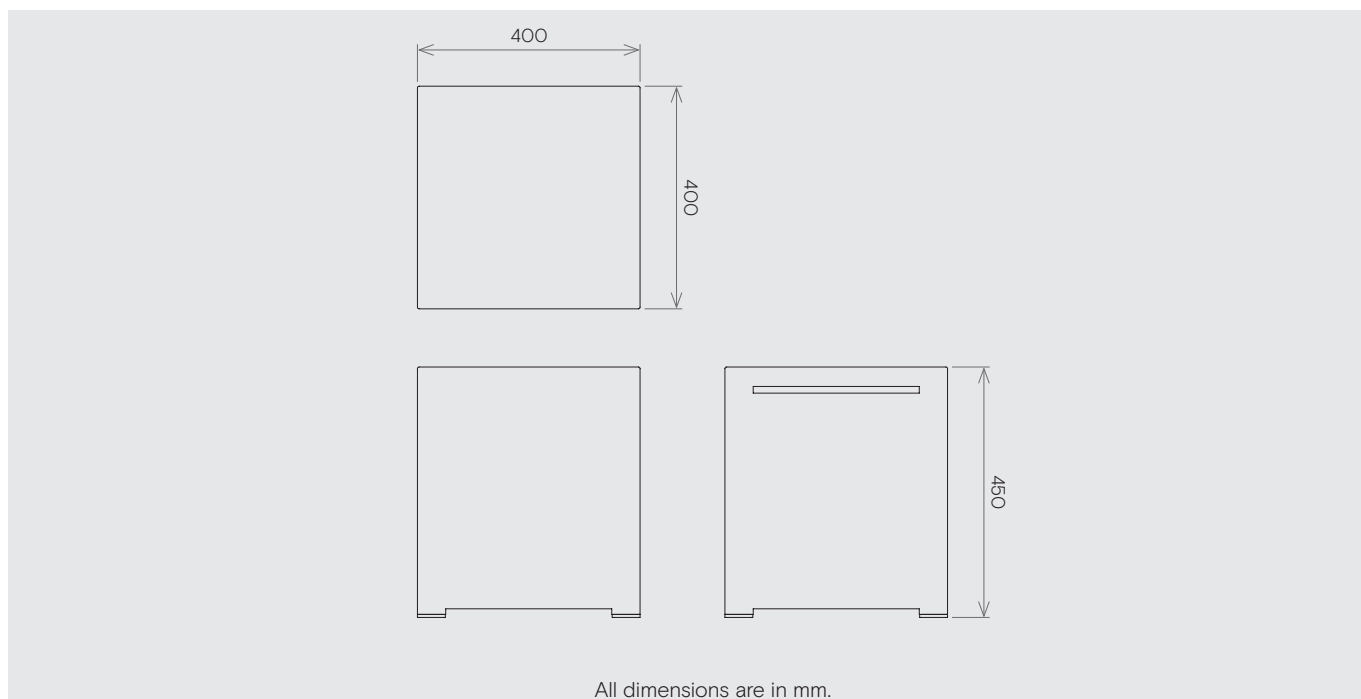
Jennifer Newman | **Cube**  
stool indoor/outdoor use

All-welded, no assembly required



400w x 400d x 450h mm

Weight 8 kg



**Fine texture powder-coat finish providing:**

- High resistance to wear-and-tear
- Low-glare reflection
- Long life durability
- Ease of cleaning
- Low maintenance
- Anti-bacterial and Volatile-Organic-Compound free.

**Other benefits and features:**

- Aluminium for long-life, will not rust.
- Grooves for ease of handling.
- Choice of RAL Classic colours  
others on request (see separate reference sheet).